





AWARDS & RECOGNITIONS

AWARDS



REVIEWS



RESORT MAP



6/2 Moo 6 Kamala, Kathu,
Phuket 83150 Thailand
Tel : 076 618217 – 23
Hotline : +66 93 579 1913

SHUTTLE BUS

Reserve 30 minutes
before at front desk only
Our shuttle service will pick up and drop off
guests at car park "Patong Beach Hotel"

Hotel to Patong	Patong to Hotel
10.30 hrs.	11.05 hrs.
11.30 hrs.	12.05 hrs.
15.30 hrs.	16.05 hrs.
17.00 hrs.	17.45 hrs.
22.00 hrs.	22.35 hrs.

- ROOM ZONES**
- A1 – Beach Rooms
 - A2 – Lagoon Pool Rooms
 - A3 – Hillside Rooms
 - A4 – Garden Rooms

- DINING**
- D1 – Old Siam Thai Royal Beachfront Restaurant (17.00 – 23.00 hrs.)
 - D2 – Marisa Terrace Restaurant (6.30 – 23.30 hrs.)
 - D3 – Romantic Private Beachfront Cabana Dining (17.00 – 23.00 hrs.)
 - D4 – Thai Sala Bakery (10.00 – 19.00 hrs.)
 - D5 – Crocodile Pool Bar (10.00 – 19.00 hrs.)

- FACILITY**
- F1 – Lobby
 - F2 – VIP Club Lounge (10.00 – 22.00 hrs.)
 - F3 – Cable Car (07.00 – 22.00 hrs.)
 - F4 – Activity Center (07.00 – 19.00 hrs.)
 - F5 – Chann Wellness Spa (10.00 – 20.00 hrs.)
 - F6 – Fitness Room (07.00 – 19.00 hrs.)
 - F7 – Pier
 - F8 – Coral Conservation Center
 - F9 – Orchid & Botanical Garden

- EVENT SPACE AREAS**
- E1 – Village Club (2nd Floor)
 - E2 – Nakalay Ballroom
 - E3 – Beach 1
 - E4 – Beach 2
 - E5 – Beach Lawn
 - E6 – Old Siam + Kantok
 - E7 – Tropical Gardens







21 FUN & WELLNESS ACTIVITIES

Classes (6 total):

- Beach Yoga Class
- Thai Cooking Class
- Fruit Carving Class
- Stretching Class on Beach Lawn
- Thai Boxing (Muay Thai) Class
- Basic Thai Language at Activity Hut

Water Activities (6 total):

- Kayak
- Paddle board
- Snorkel mask
- Swimming Fin
- Water Polo (in pool)
- Pool Float

Land Activities (9 total):

- T-Shirt Batik Painting (**Kid friendly**)
- Gel Candle Making (**Kid friendly**)
- Toy Plaster Panting (**Kid friendly**)
- Basic Pilates on Beach Lawn
- Beach Soccer on Beach
- Beach Volleyball on Beach
- Toys for Beach and Pool (**Kid friendly**)
- Petanque game on the beach
- All Day Private Love Seat



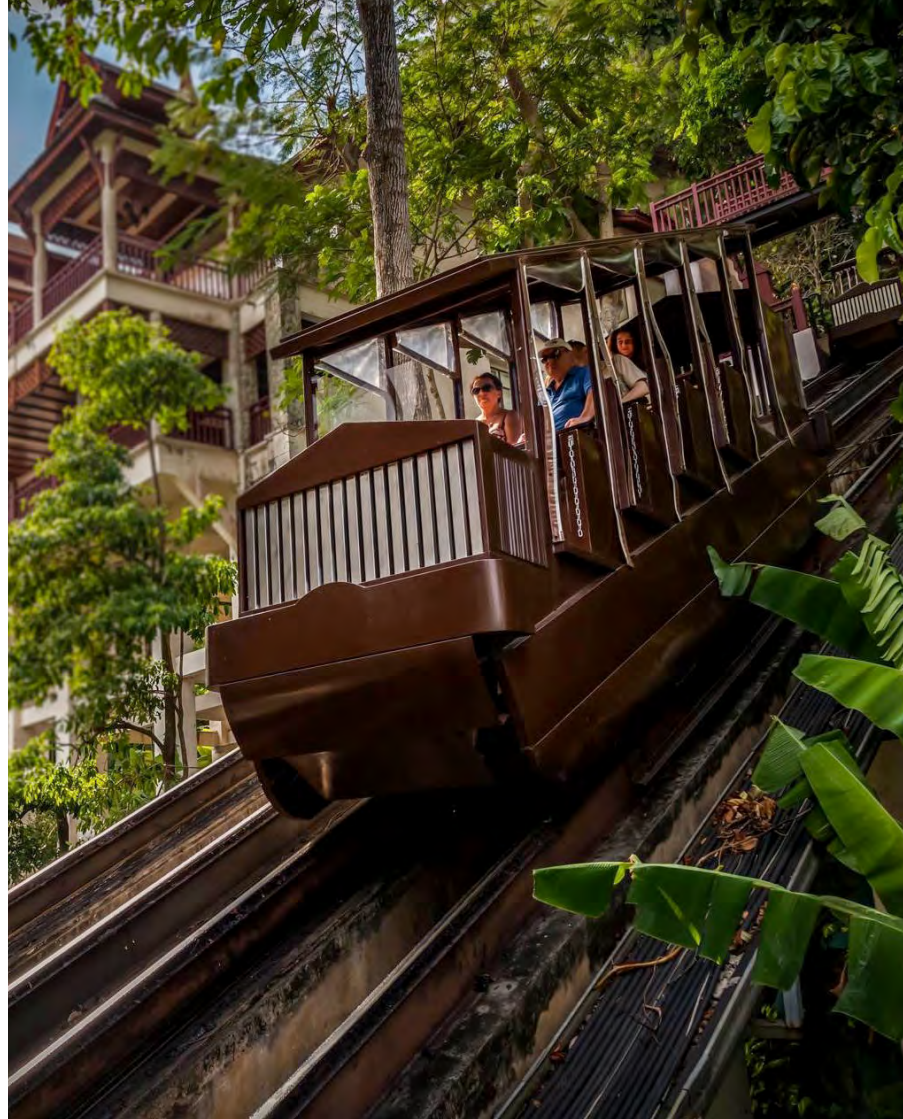
THE FIRST CABLE CAR IN PHUKET

A fun and exciting ride to the Hillside Zone rooms

As a Kamala luxury resort set on a striking hillside, Thavorn Beach Village Resort & Spa's cable car offers **breathtaking views of the resort grounds and part of the Andaman Sea** from the Hillside Zone. Our resort provides a pleasant way to access this zone's rooms through our unique cable car.

Features:

- A **fully safe funicular railway**
- An **open design** that lets guests enjoy the beautiful forest scenery and the fresh ocean air.
- A flexible operation working from **07:00 to 22:00 hrs**. Guests can also call for a separate complimentary car service to navigate to/from our Hillside zone.





55,000 SQ.M. (14 ACRES) OF EXOTIC TROPICAL GARDENS

Orchid (25+ varieties), **Bougainvillea** (5+ varieties), **Plumeria** (5+ varieties), **Cactus** (6+ varieties), **Pineapples** (10+ varieties) and hundreds of other flowering plants.





2 BEDROOM HILLSIDE SUITE WITH TERRACE BATHTUB



HILLSIDE WITH TERRACE BATHTUB

**A Romantic Escape
with Maximum Privacy!**

54 rooms | 53-59 sq.m.

**includes Bedroom, Bathroom,
and Terrace space*

Features:

Spacious Bedroom, a Bathroom & a Private
Terrace with Bathtub

1 BEDROOM HILLSIDE SUITE WITH TERRACE BATHTUB

**Luxury suite with Giant Living
Space!**

6 rooms | 131-135 sq.m.

**includes Bedroom, Bathroom,
Living room and Terrace space*

Features:

Spacious Bedroom, a Bathroom, Terrace with
private bathtub, separate split-level Living
Room, & a Dining Area (no kitchen wares)

2 BEDROOM HILLSIDE SUITE WITH TERRACE BATHTUB

**Perfect for families/large groups
overlooking the beautiful
Andaman Sea**

6 rooms | 186-188 sq.m.

**includes Bedroom, Bathroom,
Living room and Terrace space*

Features:

Two Spacious Bedrooms, Two Bathrooms,
Terrace with private bathtub, separate
split-level Living Room, & a Dining Area
no kitchen wares)





LAGOON POOLSIDE WITH BATHTUB

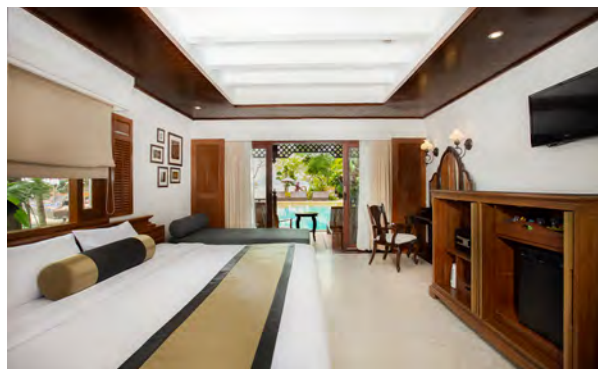
The lagoon swimming pool is just 10 steps from your bed!

24 rooms | 45-55 sq.m.

**includes Bedroom, Bathroom and Terrace space*

Features:

Spacious Bedroom, Terrace Pool Access, a Bathroom with separate showers, luxurious marble sink, & a personal bathtub



LAGOON POOL ACCESS WITH BATHTUB

Breathtaking Lagoon Pool View!

24 rooms | 46-51 sq.m.

**includes Bedroom, Bathroom and Terrace space*

Features:

Features: Spacious Bedroom, Terrace with Pool View, a Bathroom with separate showers, luxurious marble sink & a personal bathtub







BEACHFRONT COTTAGE



BEACHFRONT COTTAGE

Only 3 steps from our private beach!

15 rooms | 60-67 sq.m
**Bedroom, Bathroom and Terrace*

Features:
Spacious Bedroom, Terrace (3 steps from the beach) and large semi-open Rain Showers

TROPICAL GARDEN VIEW

Just a short walk from our private beach surrounded by lush exotic gardens!

56 rooms | 61-79 sq.m.
**Bedroom, Bathroom and Terrace*

Features:
Spacious Bedroom, Terrace (Garden & Beach Proximity) and large semi-open Rain Showers

TROPICAL GARDEN VIEW



5 DINING OUTLETS



“Royalty” Thai cuisine is incredibly rare - recipes secretly passed down from palace chefs.

Website:

www.thairestaurantphuket.com

ROMANTIC PRIVATE
BEACHFRONT CABANA DINING

Looking for something special? We will light your path with candles to your private cabana facing the mesmerizing Andaman Sea and Patong Bay.

Website:

www.phuketromanticdining.com

MARISA
SUNSET TRADITIONAL RESTAURANT

Enhance your Phuket holiday with the highest quality Thai and International Cuisine alongside our massive swimming pool

CROCODILE
POOL BAR

What is a vacation, if not a drink in your hand, by the pool, enjoying the sun

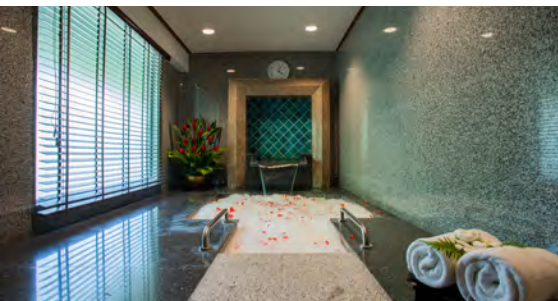
Thai Sala Bakery

Experience the best coffee, cakes, pastry, and desserts in Phuket!

CHANN WELLNESS SPA

Website: www.channspaphuket.com

Jacuzzi | Sauna | Steam Rooms | Aromatic & Traditional Massage Rooms
Signature Spa Products | Professional Staff



"2020 Asia's Top
Wellness Spa"
Now Travel Asia Awards



"2019 Best Private Beach
Resort & Spa"
LUX Life Magazine



"Thai Spa World Class"
Thailand Ministry of
Public Health

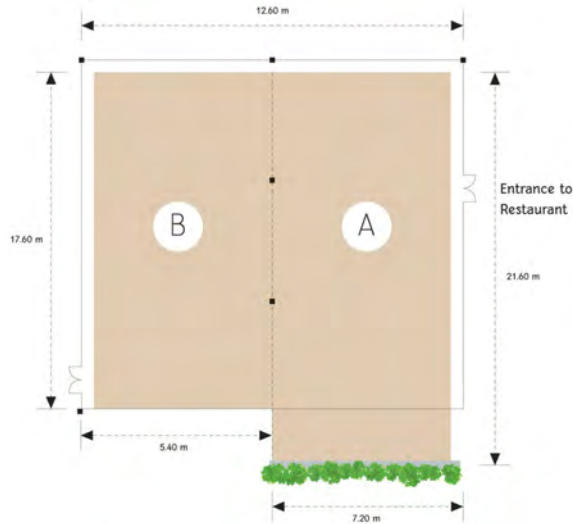


"Best Luxury Wellness Spa"
2017's World Luxury Spa
Awards

MEETINGS & EVENTS

Website: www.phuketmeetingconference.com

7 versatile event spaces (4 outdoors + 3 indoors)



Area	Theater	Classroom	Banquet	Cocktail
251 sq.m.	200	120	100	120

Set amidst natural beauty in a captivating Thai-style design, our Nakalay Ballroom is multifunctional and can be further separated into smaller rooms to cater for functions of varying sizes.





THE BEST WEDDING DESTINATION

Website: www.phuketdreamweddings.com

Instagram: @phuketbeachweddings

SUSTAINABILITY PROJECTS



At Thavorn Hotels and Resorts, we take sustainability very seriously. Staying aligned with our motto **“Where Thai Tradition Meets Nature,”** we have spearheaded several green initiatives. You can find the expanded list of sustainability initiatives (at least 10 additional projects) at each resort official websites.

1. “Save Nakalay Reef” – a Coral & Marine Life Conservation project

Website: www.phuketcoralconservation.com

- We are the **first** to collaborate with Thailand’s Department of Marine and Coastal Resources (DMCR) to save, grow, and nourish corals on natural reefs in Phuket. By 2019, we have assisted 1,600 coral fragments throughout Nakalay Bay.
- We are the **first** to establish a coral learning/monitoring & nursery centre in Phuket.
- We are Thailand’s top hotel to win 2019’s prestigious Thailand Tourism Authority (TAT)’s “Responsible Thailand Awards.”

Only six organizations in all of Thailand won this award.

2. Skip Room-Cleaning Program

We offer guests the option to refuse room cleaning service in exchange for in-resort money vouchers. By doing so, we save water and energy in laundry and waste from amenities. The numbers below only account for laundry savings. With amenities waste savings, our impact would be reflected higher.

Laundry Water & Energy Savings in monetary amounts

Thavorn Beach Village Resort & Spa	Thavorn Palm Beach Resort
Year 2018 = 520,000 THB	Year 2018 = 550,000 THB
Year 2019 = 780,000 THB	Year 2019 = 825,000 THB

3. Farm to Table

We reduce the carbon footprint by using locally grown vegetables in our staff canteen and outlets whenever possible. We grow Lettuce, Mint, Roselle, Morning glory, Cucumber, Holy Basil, Eggplant, and Bird’s Eye Chili.

4. Green Spaces

We dedicate an average of 60% and more of land to Garden spaces. With over hundreds of floral and plant species, our resorts has one of the most bountiful and beautiful gardens in Thailand.





www.thavornpalmbeach.com

Our Location:

311 Patak Road, Karon Beach, Muang, Phuket, Thailand 83100

Tel: +66(0)76 396090-3

Fax: +66(0)76 396555

Email: info@thavornpalmbeach.com

Reservation Email:

rsvn@thavornpalmbeach.com



www.thavornbeachvillage.com

Our Location:

6/2 Moo 6, Nakalay Bay, Kathu District, Phuket, Thailand 83150

Tel: +66(0)76 618217-23

Hotline: +66 93 579 1913

Fax: +66(0)76 618224

Email: info@thavornbeachvillage.com

Reservation Email:

rsvn@thavornbeachvillage.com

SALES

Office: 496 – 502 Amarin Plaza, 10th Floor, Ploenchit Road, Lumpini, Pathumwan, Bangkok 10330, Thailand

Tel: +66 2 305 5859 **Sales Email:** salesteam@thavorngroup.com

CONNECT WITH US



www.phuketdreamweddings.com
www.phuketmeetingconference.com



Line ID: @Thavornhotels



Instagram: @thavornpalm
@thavornbeach
@phuketbeachweddings



Facebook: @thavornpalmbeachresort
@thavornbeachvillageandspa



Wechat ID: thavornhotels

Name: Thavorn普吉岛塔夫酒店及度假村



Weibo ID: 7002588694

Name: Thavorn普吉岛塔夫酒店及度假村



Xiaohongshu 小红书

ID: Thavorn普吉岛塔夫酒店及度假村